

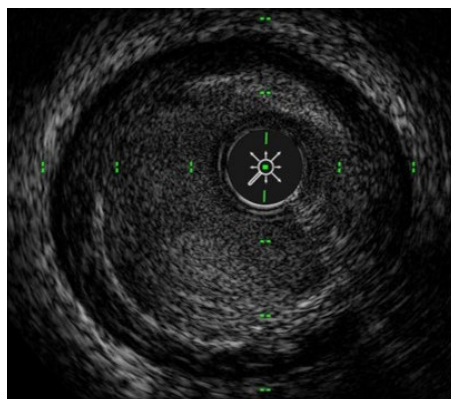
ACIST HDi[®]

High-definition IVUS System

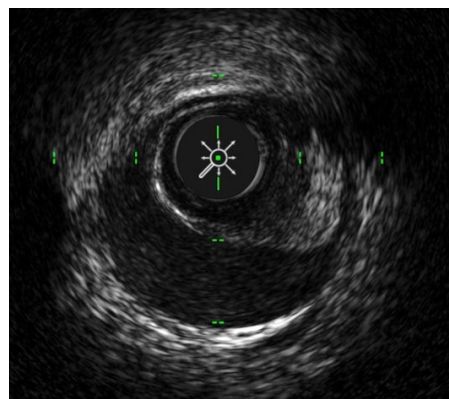
Enables optimized visualization to inform, illuminate and improve coronary and peripheral intervention strategy

Product Benefits

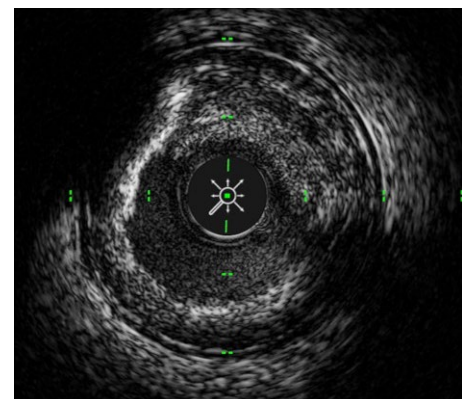
- HDi with **enhanced imaging modes** (LumenView™, SilkView™, ClassicView™) provides a **better defined** IVUS image for preprocedural planning and post procedural assessment¹
- **Improved deliverability² and optimized imaging¹** with the offset distal tip and unique variable flexibility (VariFlex™) imaging window of the Kodama[®] HD IVUS Catheter
- **Interactive** compact console with touch screen for **rapid analysis** and **small footprint** for easy cath lab integration
- **NEW** Now indicated for both coronary and peripheral vasculature procedures



Thrombus



False Lumen



Dissection

ACIST **Kodama[®]**

Frequency: 40/60 MHz

Maximum pullback speed: 10 mm/s

Monorail length: 2 cm (20 mm)

Compatible with
0.014-inch (0.36 mm)
guidewire

Compatible
with 6 Fr guiding
catheter

Transducer

Radiopaque marker
located 8 mm from
distal tip

Crossing profile
≤ 3.4 Fr

Telescopic length: 12 cm

Pullback length: 12 cm

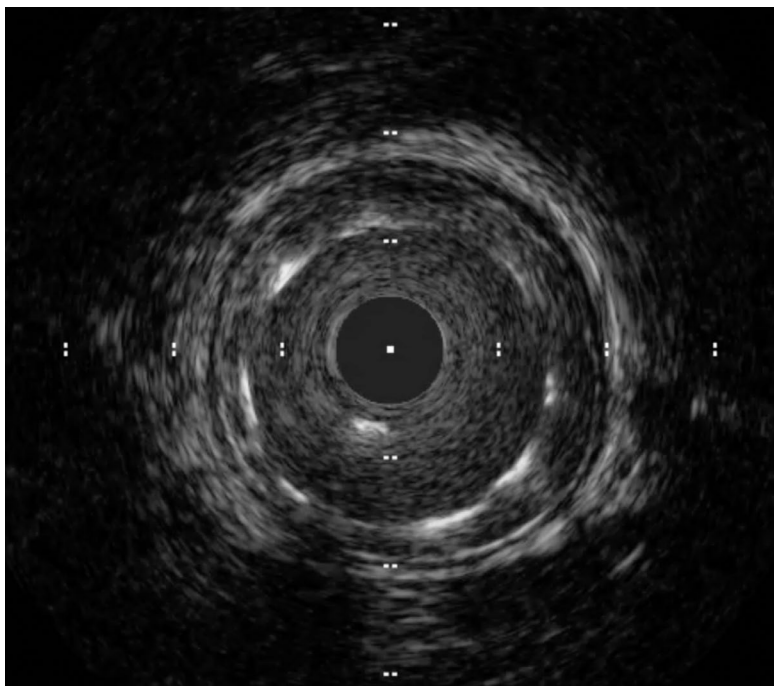
Useable length: 141 cm

Tip entry profile
≤ 1.7 F

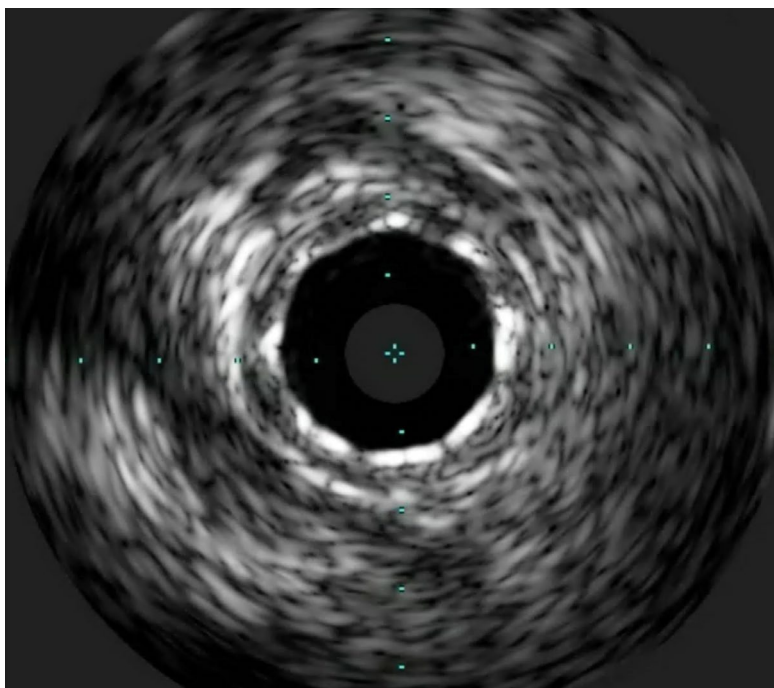
References:

1. Data on file - TR-07057 - Internal testing.
2. Data on file - TR-4050 - Study Summary for Kodama Catheter performance.

See the Difference



ACIST HDi 60 MHz



Competing IVUS 20 MHz